

NSCSH80-250/110/P45VCC4/4

Technical data

Company name
Contact
Phone number
e-mail address

Operating data

1	Pumpe type	Single pumps as parallel circuit		Fluid	Water, pure	
2	No. of pumps		2	Operating temperature t A	°C	12
3	Nominal flow	m³/h	200	Max / Min Operating Temperature mech. Seal	°C	120 / -25
4	Nominal head	m	20	pH-value at t A		7
5	Static head	m	0	Density at t A	kg/m³	999
6	Inlet pressure	kPa	0	Kin. viscosity at t A	mm²/s	1.239
7	Environmental temperature	°C	20	Vapor pressure at t A	kPa	100
8	Available system NPSH	m	0	Altitude		0

Pump data

9	Lubrication										
10	Specific design poles motor				Impeller Ø	Max.	mm	259			
11	Design	Horizontal				designed	mm	259			
12	Operating speed		1400.3 rpm	Stages		1	Min.	mm	214		
13	Suction flange		DN 100	/	PN 16	/	EN1092-2	Flow	Nominal	m³/h	200
14	Discharge flange		DN 80	/	PN 16	/	EN1092-2		Max-	m³/h	161.8
15	Max. casing pressure		kPa						Min-	m³/h	32.4
16	Max. working pressure		kPa	220.1				Head	Nominal	m	20
17	Impeller type		Radial impeller				at Qmax		m	12.8	
18	Head H(Q=0)		m	22					at Qmin	m	22.4
19	Max. shaft power		kW	15.9				Shaft power		kW	13.3
20	Pump weight		kg					Efficiency		%	81.6
21	Total weight		kg	207.5				NPSH 3%		m	1

Materials

22	Pump		Shaft Seal	
23	Volute Casing	Cast iron	Single mechanical seal, without shaft sleeve	
24	Casing Cover	Cast iron	eMG12 - Ø38mm	BQ7EGG-WA
25	Impeller	Cast iron	Mechanical seal diameter	38 mm
26	Shaft	Stainless steel	1. Rotating ring	Carbon graphite resin impregnated
27	Wear Ring	Stainless steel	2. Stationary ring	SiC, silicon carbide, sintered press.less
28	Impeller lock nut and washer	Stainless steel	3. Secondary seal	Ethylene propylene rubber (EPDM)
29	Impeller key	Stainless steel	4. Springs	CrNiMo - Steel
30	Fill and drain plugs	Stainless steel	5. Others	EPDM - WRAS
31			Gaskets of the pump	Ethylene propylene rubber (EPDM)
32				
33				
34				
35				
36				
37				
38				
39				
40				
41				

Motor data

Electrical and dimensional data refer to IE3 motor

42	Manufacturer	Lowara	
43	Specific design	IE3 3ph Flange Motor - Premium Efficiency	
44	Type	PLM 160 B35 11 kW	
45	Rated power	11 kW	Rated current 21.4 A
46	Nominal speed	1465 rpm	Rated voltage 400 V
47	Frame size	160	Service factor 1
48	Weight	kg 125.0	Degree of protection IP55

Remarks

49	
50	
50	
52	

Project	Xylect-21792917	Created by	Xylem Techniczny	Last update	2/2/2024
Block	NSCS 80-250/110/P45VCC4	Created on	2/2/2024		

NSCSH80-250/110/P45VCC4/4

Performance curve

Company name
Contact
Phone number
e-mail address

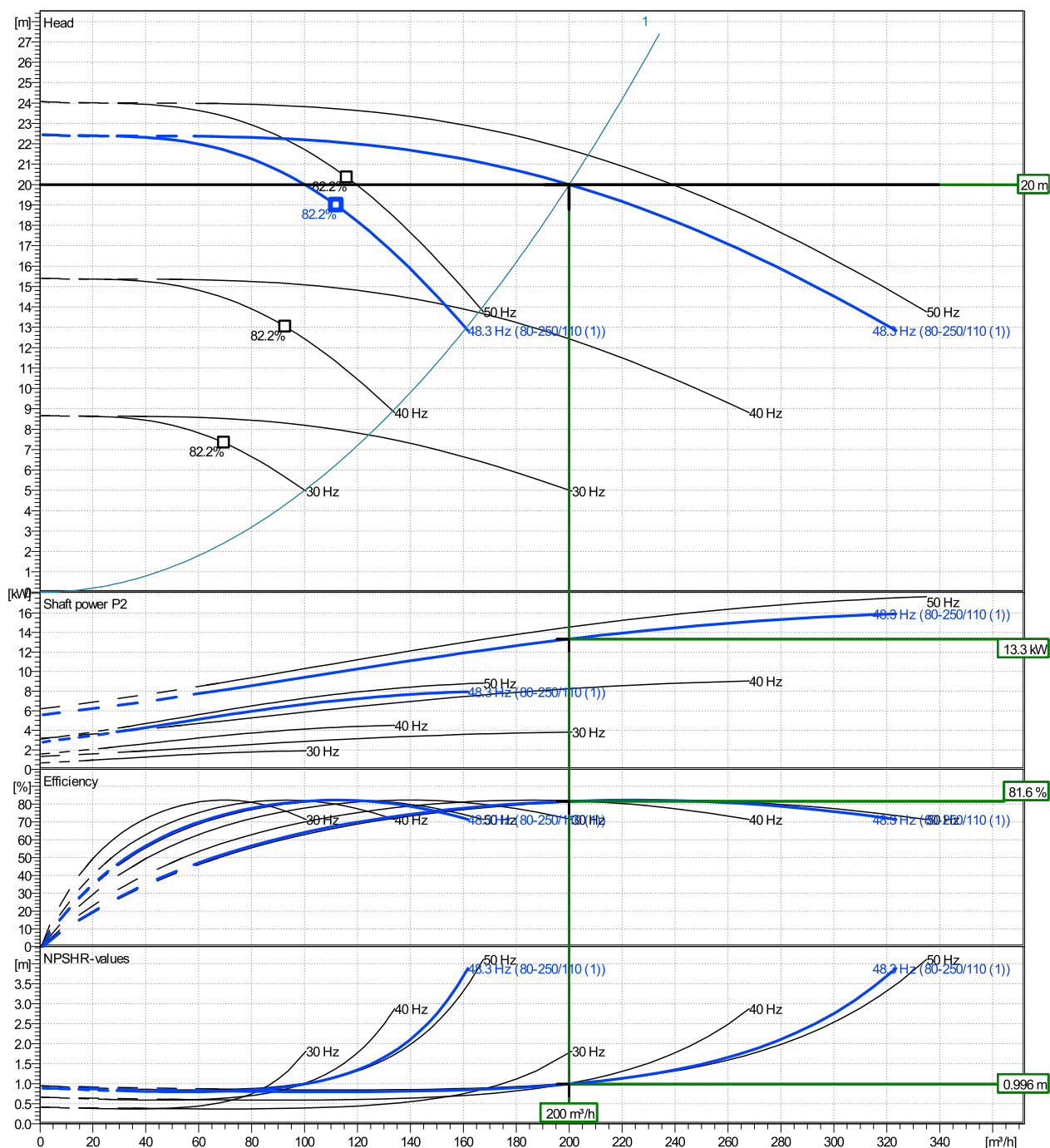
	Ø	Flow		η	Head		Shaft power P2			Frequency	Hz	50
	mm	Operating range	Min.	Max.	Max.	H(Q=0)	η	P2(Q=0)	Max.	η	Operating speed	rpm
		m³/h	m³/h	m³/h	m	m		kW	kW		Nominal flow	m³/h
actual	259	32.4	162	112	22.4	19		15.9	7.03		Nominal head	m
Min.	0	/	/	97.4	16.4	12.7		/	4.18		Inlet pressure	kPa
Max.	259	/	/	116	24.1	20.3		/	7.81		Static head	m

Power datas referred to:

hydr. Performance acceptance acc. To EN ISO 9906 Class Grade 3B

Water, pure [100%] ; 12°C; 999kg/m³; 1.24mm²/s

MEI: >=0,4



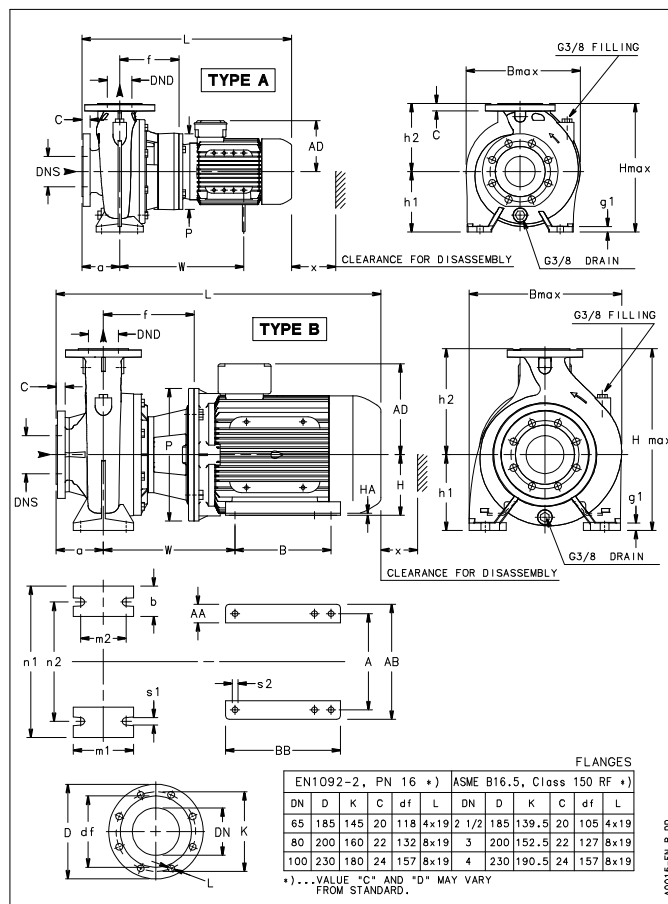
NSCSH80-250/110/P45VCC4/4

Dimensions

Company name
Contact
Phone number
e-mail address

Blockpump B35
4 poles motor
PLM 160 B35 11 kW

Electrical and dimensional data refer to IE3 motor



Dimensions [mm]

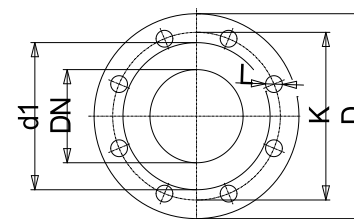
a	125
AD	240
b	80
Bmax	400
DNd	80
DNs	100
f	240
g1	21
h1	200
h2	280
Hmax	480
L	1044
m1	160
m2	120
n1	400
n2	315
P	350
s1	20
Type	B
Volumen	0.23052
w	348
x	152

Weight

Total weight	207.5 kg
---------------------	-----------------

Connections

Suction flange		Discharge flange	
DN 100		DN 80	
PN 16		PN 16	
EN1092-2		EN1092-2	
C	24	C	22
D	230	D	200
df	157	df	132
DN	100	DN	80
K	180	K	160
L	8 x 19	L	8 x 19



Value C, D may vary from Standard

Dimensions and weight without obligation

Project	Xylect-21792917
Block	NSCS 80-250/110/P45VCC4

Created by	Xylem Techniczny
Created on	2/2/2024

Last update 2/2/2024